

# Scaffolding Software

**iScaf - Design v 6.50**

# New Features

---

**December 2015**

---



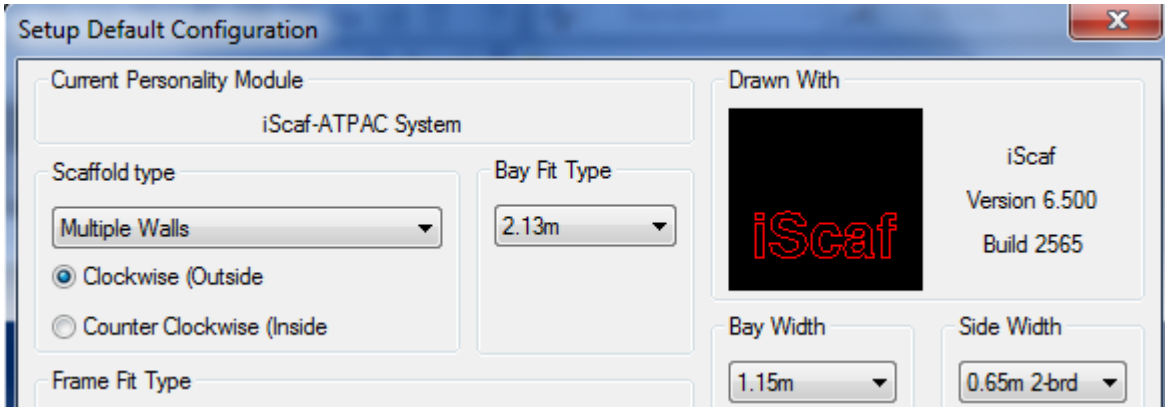
**Copyright © Scaffolding Software 2010-2015**



## iScaf - Design : 6.5 (December, 2015)

### Patch Upgrades

This is our new method to deliver quick incremental upgrades to our clients without needing to perform a re-install. This allows us to deliver new features more quickly and easily. The build number allows us to track exactly which version you have installed as shown at the top right corner of your "iScaf Setup".



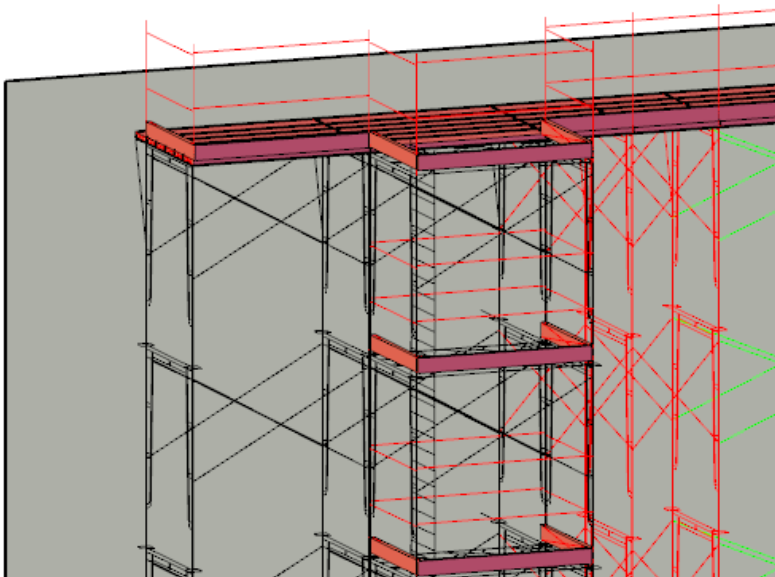
### More Modules

More improved modules including Metric Frame module; Imperial Layher module and more detailed Ringlock systems.

AT-PAC and QUICKALLY have also been enhanced and fine tuned.

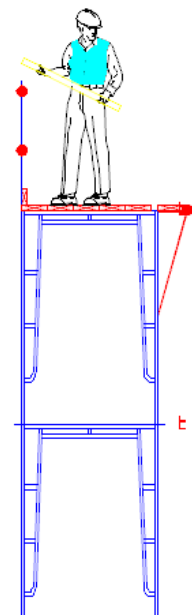
### Frames

All upgraded in iScaf 6.5 !



6 ft 4 Frame

6 ft 4 Frame



## Other Enhancements in iScaf 6.5 build 2574

Ask about our sort order feature. Higher the priority, higher the number (0 to 99). The Sort order is related to TRK file.

### FILE SHARING

iScaf can now send email data files to share or backup your information.

Data files .MOD, \$\$\$ & TRK files can now be emailed with one click. This will work for Outlook or any mapi compliant email.

### Other Items

We made some major improvements to Side Brackets and corners. It's even more refined in the last release for 2015.

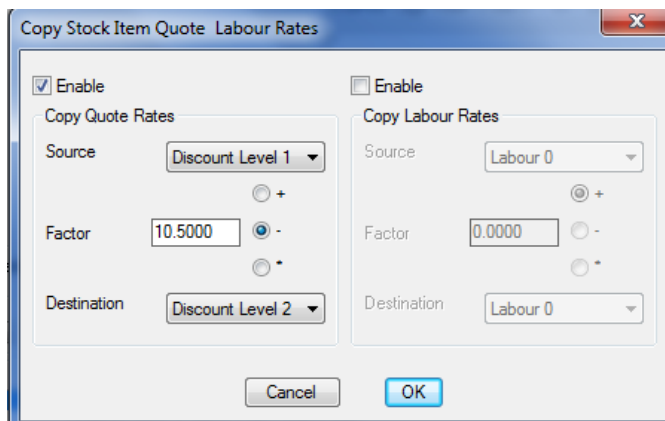
The Background building plan brightness can now be more easily controlled via the "Other Setup" and "Transparency" option.

Enhance and build a more detailed set of parts. iScaf Improved "attach custom block" to your material list.

iScaf custom cleaver "Flipx" command has been enhanced with insert point option.

Lap boards will now completely follow the deck setup for any chosen individual bay.

Build section drawings can now build with or without jacks.



Notes in relation to copy rates price changes:

These are all % values (-) Percentage decrease (+) Percentage increase (\*) Factor is actual % of. Eg 90% of original or 55% of original.

In the example, we are copying all rates From "Discount Level 1" to "Discount Level 2" and then decreasing by 10.5%

Bay labelling feature can now include the Stage or Area number where 0=A, 1=B, 2=C etc.

Multi language settings have been improved. . to help export and import a list of strings to change the language and terminology to suit any region: ENGLISH ITALIAN DUTCHGERMAN SPANISH PORTUGUESE FRENCH translations already exist.

Module configuration now has "Miscellaneous" options which will allow the total configuration of any item in the module by the end user. A good example to control the general text size for bay labels where: "Bay text size" 300 and "Bay text size small" 150 are good settings. "Symbol Position" is the distance in mm or inches to represent the handrail in plan.

iLabour and iTruck and units have been enabled with html output (same as Quote).

Difficulty factor rate for "units" including "rates" and 14 parameters can now be saved in the module in relation to additional calculations.

## iScaf - Design : 6.5 (August, 2015)

### Windows 10



No Problem! All our software runs on **Windows 10**. iScaf is also optimized for 64-bit operating systems.

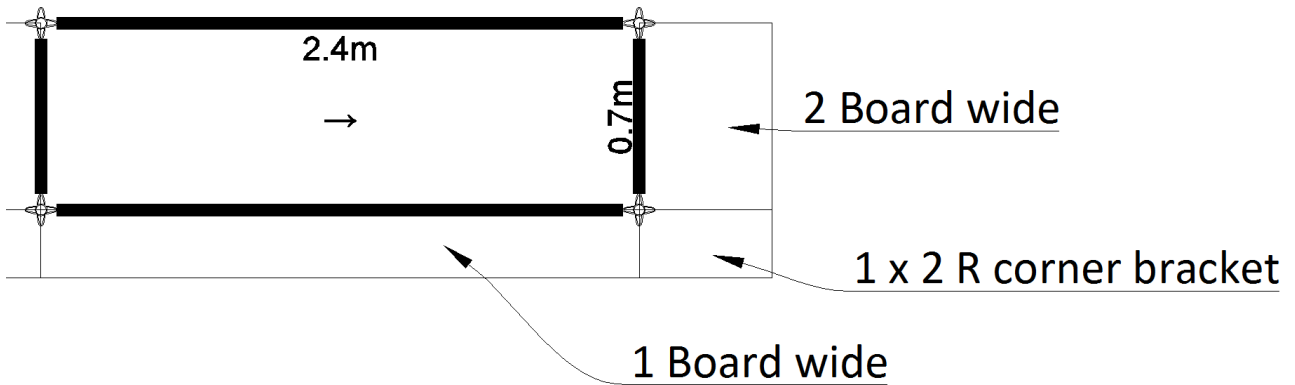
### Plan Design



The plan drawing now contains more solid professional look when zooming in. The plan shows the actual Rosette, V Pressing, Cuplock or any detailed connection point on each standard. New "Bay\_rosette\_style" Styles: -1 donut, 0 cuplock, 1 kwikstage, 2 layher.

### Side Brackets (Hopups)

Ability to mix side brackets sizes on all sides of a single bay. Ability to mix side brackets sizes on as single bay at different elevations and heights. This includes the ability to handle all combinations of corner brackets depending on your scaffold system.



### Custom Components

To enhance your drawings, use our new custom block library, and add your own custom blocks to include with your material list. There are now New blocks to assist with Gantries, Hoardings and Cover ways.

## Training



The iScaf public YouTube channel has been launched with many additional training videos



## Quote Format

Output to our new HTML format to view in your web browser on any device. Email the quote to a colleague. Insert your own company logo using the "Other Setup" option.

## Templates

It is now much easier to create an unlimited number of your own drawing templates in iScaf with custom default settings for different scaffold requirements and styles.

## Other Features

In the Plan, the bay label is now shown on top of any handrail or other symbol for improved clarity.

Bay Labelling now includes stage labelling as A, B, C D etc. for 0, 1, 2, 3 respectively.

Full control is now available for bay labelling font and text size. Bay Labelling is now saved locally during each iScaf session.

There is now an option for "None" for the normal Jack (bottom) Type.

It is now much easier to adjust the background image intensity. Background layer transparency is now in "Other Setup".

Automatic 1 - click email for the current custom module and drawing now available for improved support.

Trap door styles straight or angled can now be adjusted in the module.

Bays which are smaller than 4ft or 0.7m are scaled to show smaller text for improved readability.

Side brackets as handrails are now drawn as solid drawings for improved appearance.

Side bracket handrails previously shown in mid-air will now no longer happen.

iScaf can now control the handrail symbol position distance on the plan. The "Symbol Position" works well now for this and '150' is a good setting.

Edit wall with multiple selection "Unhandled exception error" is now fixed.

Version 6 and above now locks the serial number to the Windows Registry.

## iScaf - Design : 6.02 (December, 2014)

### Solid Building

You can now show a solid building in 3D with the simple menu option. Use Build->"create solid building "; and you plan perimeter will show a solid structure as shown below.



### 3D Ladder Beams and Trusses

You can now show solid 3D ladder beams and trusses in your drawings straight out of the box. In addition to the Fast Edit mode, where you can use the "Truss" option, you can now insert Solid 3D ladder beams into your drawings.

Use the Pull down menu "insert" -> "block" and you can browse the "bonus" folder in iScaf for Metric and Imperial library for these Ladder Beams, Lattice Beams and Trusses.

You can use this on your 3D drawing and you can also use the new "Flipx" toolbar option to show the item correctly on a side elevation if you decide to add it later.

### New block Library and Custom Part Library

You can now use the Pull down menu to "insert" -> "block" and you can browse the "bonus" folder in iScaf for Metric and Imperial library drawings that now come with the system. In addition to this, you can create and add to this library yourself and attach your part numbers, descriptions with weight and pricing to each block.

### Improved Prompting

The system will help you by asking questions right where your mouse is so you know what to do next.

### Birdcages/Dance floors

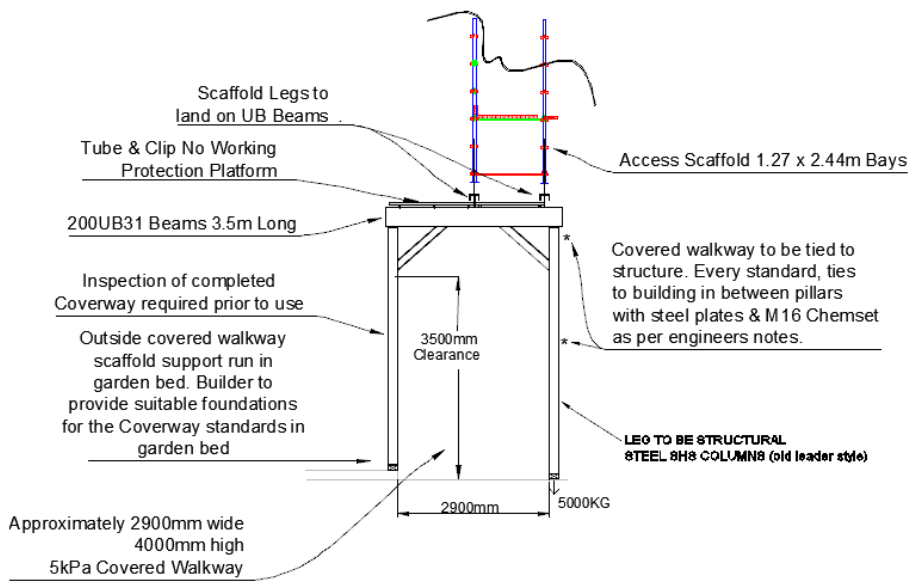
New Area/Fill command is the new shortcut method which will allow you to fill a rectangular area with scaffold with just a few simple clicks.

### Great new toolbar options to easily annotate your drawing

We now have easy shortcuts to create great looking Arrows & Text boxes to label and annotate your drawing.

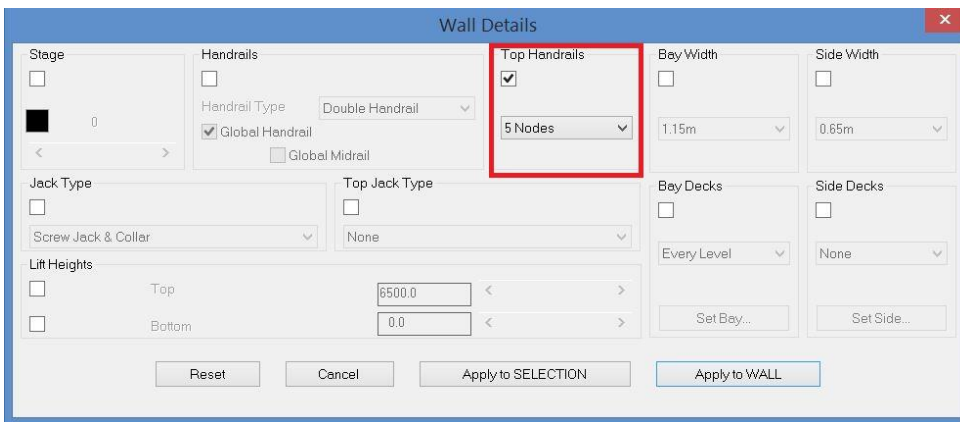
## Improve your section and side elevations

Use the improved BEDIT option and Join Section Image option to improve your side elevations to show how the scaffold needs to be built.



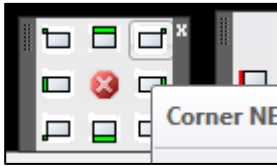
## Multiple top handrails

Easily edit the external top handrail height on any bay and extend the outside vertical to allow for as many handrails as you need. (Roof Protection)



## iScaf - Design : 2.5.539 (June, 2014)

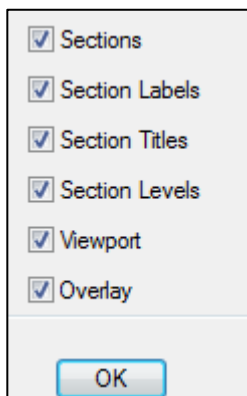
### Toolbars



New toolbars were introduced at the end of 2013; and improved further in 2014. A great user interface improvement which really assists new users in their learning of the system.



### Layers



This feature allows you to easily turn on and off different parts of the drawing. Simply click on our toolbar option then use the check boxes to turn off the background image or other parts of your drawing as required.

### Performance



Speed improvements provide even greater productivity gains when working with very large scaffold jobs.

### Import PDF



Insert a PDF of architectural drawings to scale, directly from the toolbar. You can easily trim the PDF and change the intensity of the background image to suit your requirements.

### Bay Labelling

“Bay Numbering” functions have been enhanced and given the new title “Bay Labelling”. A new feature here also allows you to optionally show the width of the bay.



## PDF in and OUT with scaffold



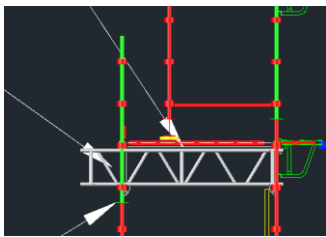
New techniques and settings allow you to streamline your final output as a PDF file showing the background image of building with scaffold and full side and face elevations showing the building.

## Improved Lap Boards

The connection bay in between Tanks is now more clearly displayed in the Plan view, with connecting tube/clamp.

If you need to lap from a ladder bay, each Lap inherits the deck properties of the ladder bay.

## Trusses/Ladder Beams



Additional styles are provided for Ladder Beams; an improvement which brings the total available Ladder Beam/Truss styles to nine.

## Toe Boards

These can now be configured to start at any height, since scaffold may not need Toe Boards at lower levels as per your requirements.

## User Manual

Our software is always being enhanced. These changes, while great for our customers, always manage to infuriate our staff because we have to work hard to keep the User Guide up-to-date! A new and improved User Manual (available on request) has been created to supplement the existing **Training Videos**.

## New Ladder Styles

We have added Ladder Style 8, which uses only 3.6 meter and 3.0 meter ladders, providing conformance to the requirements in NSW Australia.

Ladder top down with 2 meter lifts allows the user to fill in the bottom with custom components, if an odd height needs to be allowed for.

Ladder style 7 was a custom improvement for our Canadian marketplace.

## Elevation Section Markers

These can now be mirrored for End Sections and Face Sections, allowing elevation cuts to be visible from Front, Back, Left or Right on any scaffold run or bay.

## Actual RL Levels

The scaffold drawing can now map to the RL levels shown on your original architectural drawings and those shown on the scaffold elevations. These are automatically generated.

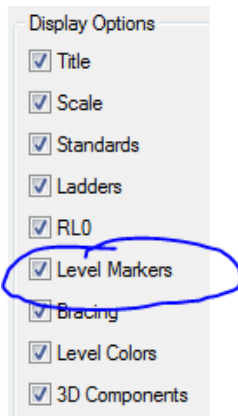


### How do you do this?

In Extra Setup, the RL Offset option at the bottom right corner of this window allows you to map the RL in the CAD drawing to the actual RL levels. Then, at the time of building the sections in 3D or manual section, this mapping will take place.

To show this mapping when you define the section, check the box to show the “Level Markers”.

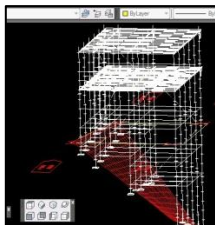
When you display the elevation section as normal, you should see the section with the RL including the actual RL levels.



### Birdcages/Dance floors

These have been enhanced so that C, U, & N shaped structures now operate as expected during Build 3D and Quote functions. This greatly improves accuracy during the creation of these “Odd” structures.

### Surface Mesh & Add slope



We have improved this function to conform to any sloping ground surface in 3D. This also works with the updated Attach Slope menu option.

### Aluminium Stair

For Australia, we have added a third Aluminium Stair option which builds from the bottom-up instead of top-down. As normal, the user can adjust the height to decide the stair finishing point, allowing for maximum stair flexibility independent of the scaffold. This option adds to our extensive library of Stairs and Ladders.

### Make Scaffold Wall

In addition to the Standard Auto Build plan option, we have provided a much-improved “Make Scaffold Wall” feature; with the following enhancements:

- Auto Straight Wall option
- Optional Offset feature
- Define Number Bays

We've added a new check box, allowing you to offset against walls in a Vector PDF file. This feature is useful when creating a direct drawing of scaffold on a PDF file; laying out the bays without the need for drawing a plan line.

## Negative extras

This feature allows you to manually remove a fixed number of items on a drawing, improving the accuracy of the Final Material list. This is a useful special technique for aluminium component swap outs.

## Saving Files

We have merged the "File Save" and "Save As" toolbars, improving your accessibility to all save options for revision history.

## The "Donut"

We have made some recent changes to remove the "Donut", representing the standards in between the ledgers in the Plan view, as a default option. Based on recent feedback, this is not always desired. The current quick fix for this is to rename "\_BAY\_0a" to "\_BAY\_0a\_backup" and then rename "\_BAY\_0" to "\_BAY\_0a" in the iScaf->parts folder.

An easier selection option will be available in the next release.

The added benefit here is that you can separately edit "\_BAY\_0a" in the part library to customise the look and feel of the bay style. Backup the file first and give it a try!

## Optional Internal handrail

Now stays correctly when the bay size is changed.

## "Base" Command

This command can be used for specifying the insert point of any block; helpful when you are creating end user custom parts and title block definitions.

## Title Block Tips

Here is another method to modify your company template:

Lay out the drawing sheet as normal

Make sure your logo artwork is in the "parts" and "titleblk" folder

Type "Bedit"

Click on the block name, click OK

Insert raster image reference and select your company logo

For "Path type" select "No Path"

Stretch and place your logo as normal

Edit as needed

Finish with "Close Block Editor"

Type "wblock" for "Source" select "Block"

Save to the title block folder with the name of your choice



## iScaf - Design 2.5.538 (May, 2014)

### Custom Parts

Create User Custom Part has now been included in toolbar menus alongside the Add Generic Custom Part & Add User Custom Part commands.

### Scaffolding Arcs

Any arc can be scaffolded as part of standard arc command or usual "draw perimeter" option.

### Heavy Duty Transoms

The choice of heavy duty transoms can be used for wider bays. These items can be defined in your part count in your custom module.

## **iScaf - Design 2.0 (January, 2014)**

### **New Toolbars**

iScaf design can now work exclusively with new toolbars. This is a great user interface improvement, allowing quicker learning for new users.

### **Drawing Display Options**

You now have the ability to turn on and off display for different parts of the drawing.

### **Enhanced Speed**

Speed improvements provide even greater productivity when working with very large scaffold jobs.

### **Optional Built-In CAD**

You no longer need to purchase AutoCAD separately to use iScaf – Design.

### **Background Imaging**

You can now insert a PDF image file to scale and trim directly from the toolbar with ability to change the intensity of the background image.

## New Training Topics (October, 2013)

Below is a list of the latest training topics and new features:

- Inserting a building image from PDF or TIFF file external drawing, tracing your building around that image and then scaffolding it!
- joining an elevation with a background image on drawing, for side elevation
- module change to handle solid hop ups/side brackets for elevations and sections
- making your building outline look like a real solid building
- changing the colours on your plan to your own custom colours
- trusses/ladder beams
- advanced title block setup
- configuring the personality module
- making backups
- advanced ladder towers and stair units (mainly for Canada)
- building dance floors/bird cages
- tanks
- extras
- lift control
- levels and stages
- achieving greater accuracy with parts list quantities
- bay numbering
- command prompt techniques
- changing the module to assist with bug fixes
- building the AI stair at different heights to cater for odd heights using the design top down build feature

## **iScaf - Design (July, 2013)**

### **Moving Scaffold Man**

New Scaffold man can now be moved within your design to show on an elevation.

### **Section Labels Positioning**

The positioning of the Section labels can be positioned as a standard within your design.